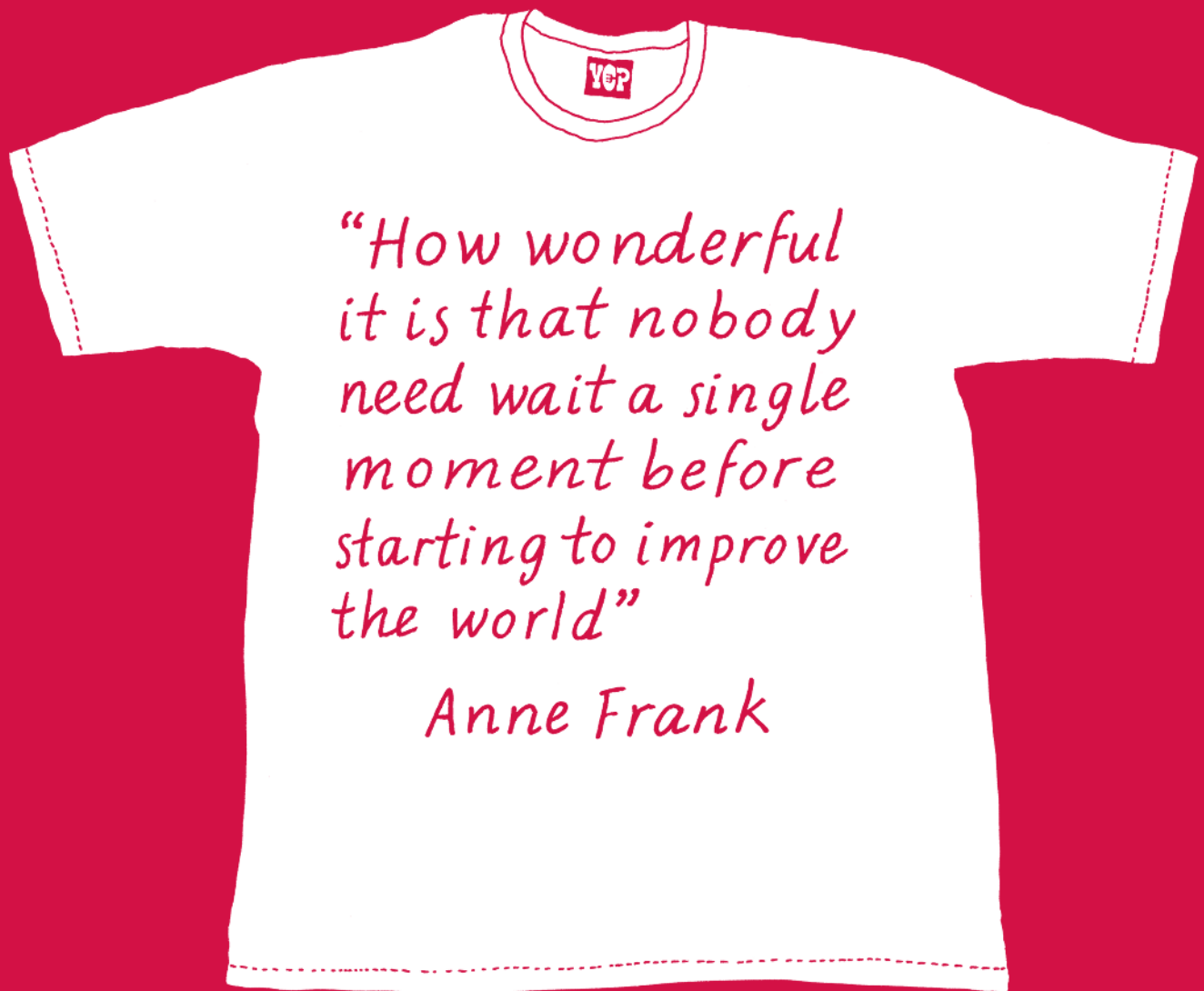


Yorkville Common Pantry | Annual Report 2007



*"How wonderful  
it is that nobody  
need wait a single  
moment before  
starting to improve  
the world"*

*Anne Frank*

## LETTER FROM THE CHAIR AND THE EXECUTIVE DIRECTOR

Dear Friends,

This year has been another exciting one for the Yorkville Common Pantry. Our much-anticipated renovation is complete, and, by early May, all of our programs were once again under the same roof. The building is now a warm and bright place for our clients to pick up their groceries or sit to eat their meals. Today, at YCP, our clients find a safe haven that includes comfortable indoor waiting space, an easy-access ramp for disabled clients, nutrition and health programs and services, showers, laundry facilities, and Wednesday morning haircuts! The artwork that adorns the walls is both whimsical and welcoming.

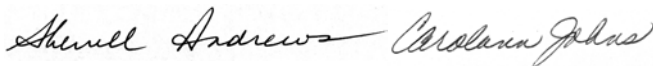
In short, we are home.

We are grateful that we are able to provide the services we do in the dignified manner in which we do it. Sadly, however, the number of clients we are serving has increased dramatically in the last six months. The well-reported national food shortage caused by federal cutbacks and the Food Bank's inability to recoup those losses has forced many food pantries and soup kitchens in the area to close. At the same time, the need to address diabetes and obesity is a continuing challenge. Thus, we face the reality of having to purchase not only more food, but also more nutritious food. You may have heard that today one in five New Yorkers is living below the poverty level. This alarming statistic is further proof that YCP must maintain its commitment to eliminate hunger while providing our clients with the tools and services they need to gain self-sufficiency and preserve their dignity.

With the encouragement and support of kind friends like you, we will be able to do just that for as long as we are needed.

Warmest thanks from the entire YCP family.

Sincerely,



Sherrell Andrews  
CHAIR

Carolann Johns  
EXECUTIVE DIRECTOR



## BOARD OF DIRECTORS

SHERRELL ANDREWS | CHAIR  
LINDA E. HOLT | VICE CHAIR  
MARY McCAFFREY | VICE CHAIR  
REBECCA ROBERTSON | VICE CHAIR  
ANNE P. MacKINNON | SECRETARY  
PETER PRONT | TREASURER  
CAROLANN JOHNS | EXECUTIVE DIRECTOR

ANTONIA ABRAHAM  
HARTLEY BERNSTEIN  
MONTY BLANCHARD  
SUSAN BOHAN  
LUCY VAN I. BORGE  
HILARY HART BROWN  
CHERYL BUNDY  
HELEN CHAPMAN  
CHRISTINE DARNELL  
JOHN ERICKSON  
DIDI FENTON-SCHAFER  
CANDICE K. FRAWLEY  
EDWARD GALLAGHER  
KATHERINA GRUNFELD  
CAROLYN HANDLER  
JAMIE HIRSH  
STUART JOHNSON  
PATRICIA KELLY  
SUSAN KESSLER  
SUZANNE KIZIS  
MIRIAM KLINGER  
DOREEN S. MORALES  
DOLORES MORRISSEY  
MICHAEL NACHMAN  
KATHY L. NALYWAKO  
NEDA NAVAB  
LITE SABIN  
WENDY GARTNER SALLES  
MALLORY SPAIN  
WENDY STEIN  
VERONICA MALLORY STUBBS  
ELAINE WEISS  
LAURA WEISSBERG  
DAVID WENGROD  
DARYL WILKERSON  
ROLAND WOODLAND

## MISSION STATEMENT

**The Yorkville Common Pantry (YCP) is dedicated to reducing hunger while promoting dignity and self-sufficiency. YCP champions the cause of the hungry through food pantry and meal distribution programs, nutrition education, basic hygiene services, homeless support, and related services. YCP's community based programs focus on East Harlem and other underserved communities throughout New York City.**





## A NEW HOME FOR YCP: FUND FOR THE FUTURE

### **Yorkville Common Pantry is at an exciting turning point in its 26-year history.**

The recently completed renovation of our facility will enable Yorkville Common Pantry to continue to meet the needs of the hungry and disenfranchised of our city for many years to come. In 2004, it became evident that YCP would need to renovate its facilities to improve the capacity and efficiency of services and to boost the atmosphere of dignity that is the agency's hallmark.

With a generous donation from the Robin Hood Foundation, YCP was able to draw up plans for a complete renovation of the building and to begin the process of a three year, \$6 million capital campaign. In June of 2006, YCP moved its programs to three temporary locations in the neighborhood and demolition began. In the nearly year long renovation, service to YCP's clients was NEVER interrupted.

The renovation has created a space that solves the many longterm problems as well as accommodating planned improvements, among them:

- Our clients have access to generous indoor waiting space, allowing them to wait comfortably inside, and providing a greater degree of dignity in the process.
- Handicapped and elderly clients have access to the building via a ramp and an elevator.
- Larger indoor space allows for several programs to run concurrently.
- There is a discrete space and improved layout for Pantry Program distribution.
- In addition, the space allows for an increase in the number and quality of services available to clients, e.g. room to increase the nutritional education component of our programs and the ability to offer additional support services provided by outside agencies within YCP premises.
- Cold and dry storage space has been greatly increased, enabling YCP to accept larger deliveries of food.
- Improved kitchen facilities will accommodate the planned emphasis on healthier food.

Support for this ambitious project has been outstanding, and YCP continues to communicate with its current stakeholders and new supporters (during this next phase of the campaign.)





The renovation has allowed YCP to continue to maintain three distribution days for Pantry, with one of the three days designated for senior citizens and disabled individuals. In addition to the three day distribution, we have maintained our staggered schedule, where families, based on their size, come for their Pantry bag during a designated time period. This, coupled with more available seating, has allowed YCP to virtually eliminate the “bread line.” The new ramp and entrance promote independence for our senior and disabled clients, allowing them to enter the facility. For many, this is the first time they have ever been inside the building.





The lower level multi-purpose space is brighter and the central air conditioning and heating on the lower and first levels allow our guests and volunteers to work and receive our services in a more welcoming environment. The renovated laundry/shower room lets us provide more privacy and increased laundry services to our guests. When set up as the dining room, the multi-purpose space can seat 91 people. Previously, YCP could seat only 60 guests at a time.

Since moving back in, we have seen a 30% increase in the number of guests we serve. In order to accommodate our new clients joining us for breakfast and dinner, we have extended our serving time by an additional half hour for both meal times as well as added another cook to help with preparing a larger volume of food. In an effort to address the increased need, YCP now offers our meal program guests a take-out option, which many appreciate.

### FUND FOR THE FUTURE GOALS

BUILDING CONSTRUCTION	\$ 4.35 MILLION
RESERVE FUND	\$ 1 MILLION
PROGRAM DEVELOPMENT	\$ 450,000
TECHNOLOGY	\$ 200,000
OVERALL CAMPAIGN GOAL	\$ 6 MILLION

For more information on YCP's **Fund for the Future**, please contact Susie Hanchett at 917.720.9707, or send an email to [shanchett@ycp.org](mailto:shanchett@ycp.org).

# FUND FOR THE FUTURE CONTRIBUTORS

## CHAIRMAN'S CIRCLE - \$3.2million + ROBIN HOOD FOUNDATION

### \$200,000 +

VERONICA MALLORY STUBBS

### \$150,000 - \$199,999

DIDI AND OSCAR SCHAFER

### \$100,000 - \$149,999

KARIN AND HENRY BARKHORN

### \$50,000 - \$99,999

BARBARA AND HENRY GOOSS

LINDA AND PAUL HOLT

RUTH HOROWITZ AND MICHAEL NACHMAN

### \$25,000 - \$49,999

SHERRELL ANDREWS AND ROB KUHBACK

CANDICE AND JOHN FRAWLEY

MARY AND LARRY McCAFFREY

REBECCA ROBERTSON AND BYRON KNIEF

WENDY STEIN AND BART FRIEDMAN

### \$20,000 - \$24,999

THE SULLIVAN FAMILY FOUNDATION

### \$15,000 - \$19,999

EDWARD V. BLANCHARD

HELEN CHAPMAN AND ROBERT MONROE

MARILYN AND JAY LUBELL

ANNE AND JOHN MacKINNON

ELAINE AND ROBERT WEISS

### \$10,000 - \$14,999

SUSAN AND PETER KESSLER

### \$7,500 - \$9,999

KATHY NALYWAKO

### \$5,000 - \$7,499

SUSAN AND PAUL BOHAN

LUCY VAN I. BORGE

KAREN AND JOHN ERICKSON

DRUCILLA HASKIN

STUART JOHNSON

CHERYL AND JAMES LEBENTHAL

ELINOR MANNUCCI

LITE SABIN

### \$2,500 - \$4,999

ANONYMOUS

EDWARD GALLAGHER

SUMNER GERARD FOUNDATION

CAROL ANN AND DOUGLAS MERCER

MARSHA AND PETER PRONT

LYNNE AND JOHN ZURCHER, JR.

### \$1,500 - \$2,499

HILARY AND PAUL BROWN

ROLAND WOODLAND

### \$1,000 - \$1,499

CHERYL BUNDY

BETH AND SHELDON FINKEL

MIRIAM KLINGER

WENDY GARTNER SALLES

LAURA AND JAN WEISSBERG

### UP TO \$999

ANONYMOUS

ANTONIA ABRAHAM

HARTLEY BERNSTEIN

WILLIE CARTER

CHRISTINE DARNELL

ELIZABETH GREEN

JAMIE HIRSH

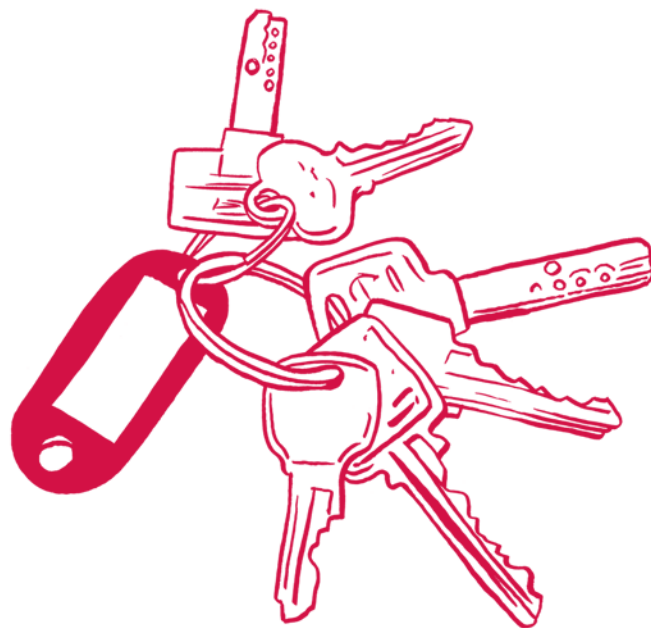
PATRICIA M. KELLY

SUZANNE KIZIS AND DAVID WENGROD

JOSEPHINE MERCK

DOLORES MORRISSEY

MALLORY SPAIN







**PANTRY PROGRAM** YCP's Pantry Program is New York City's largest community-based food pantry and is designed to meet the needs of our families by providing culturally-appropriate and nutritionally-balanced food. Every Thursday, Friday, and Saturday, YCP distributes grocery packages to over 1400 families. Our unique Saturday program is able to serve the working poor and those participating in education or training programs during the week. Volunteers prepare bags of groceries that provide each family member three meals a day for three days. A typical Pantry bag includes non-perishable items such as juice, cereal, milk, pasta and/or rice, beans, canned vegetables and fruits, miscellaneous items such as soup, snacks, and condiments, as well as perishable items such as meat/poultry, fresh fruits and vegetables, frozen vegetables and bread.

**PROJECT DIGNITY** Project Dignity is designed to meet other needs of homeless and hungry individuals in our community and consists of a range of services. The Dignity Meal Program serves breakfast Monday through Friday for 200 individuals (sometimes even more on pancake day!) and dinner on Mondays, Wednesdays and Fridays for approximately 300 people. Our staff chefs prepare the meals with wholesome ingredients with a balance of protein, fruit, grains and vegetables. Beyond providing nutritious food, the Dignity Meal Program offers participants a chance to sit, eat and socialize in a relaxing, safe and convivial atmosphere that may be their only reprieve from the stress of being homeless or struggling. The case manager provides counseling and referral services, working with up to 50 meal program guests weekly to help them obtain housing, jobs, entitlements, substance abuse treatment or other medical and social services. Additionally, we invite various community outreach workers, such as Lenox Hill Neighborhood House job counselors, Food Stamp advocates, and Settlement Health HIV counselors, to assist clients during meal programs. Project Dignity's array of services is designed to meet the most basic needs of YCP's clients— food, shelter, hygiene services—as well as the larger, more challenging issues they face—long-term housing, health care, benefits and employment. The overall goal of the Program is to serve as a bridge back to health, well-being and self-sufficiency for our homeless and hungry clients.

# YCP PROGRAMS



**24/7 YCP** In February 2003, 24/7 YCP, New York City's only 24-hour emergency food program opened its doors for the first time and has remained consistent in its service. Those who come to YCP are eligible to receive an emergency grocery package that provides nine nonperishable meals per household member, and, if needed, a brown bag meal is available to consume immediately. Families and individuals access 24/7 YCP for emergency food assistance when other pantries are unable to provide assistance or are closed.

**MARIA'S COOKSHOP** Maria's CookShop is a nutrition education workshop offered to client families at Yorkville Common Pantry. The prevalence of diabetes and obesity are staggeringly high in East Harlem. Nutritious and affordable foods are harder to come by than in neighboring affluent communities, both causing and exacerbating this public health crisis. CookShop directly addresses these issues, which are unquestionably linked to poverty and poor nutrition.

CookShop workshops focus on the health and economic benefits of using seasonal and locally grown produce to prepare simple recipes at home. Recipes include items distributed through our weekly Pantry Program, encouraging clients to use Pantry staples to create satisfying meals. Each recipe is broken down so that clients learn step-by-step how to measure ingredients, and how to clean and prepare vegetables for cooking while maximizing the health benefits of a range of ingredients. A strong emphasis is placed on the nutritional value of each vegetable used, ensuring that workshop participants learn about the vitamins and minerals that are in the ingredients. Participants learn how to shop for healthy and affordable foods in the community, the economic benefits of purchasing produce from local farmers, and the impact of such purchasing practices on the community at large.

Benefits of CookShop include building a sense of community and creating a safe space for participants while strengthening relationships with YCP staff and programs. Respect for both cultural food preferences and individual strengths helps to create a participatory and diverse learning environment where clients teach one another, building self-esteem and positive relationships. The workshop serves as an informal support group where clients share experiences and advice, often seeking support from one another on issues ranging from child rearing to spousal relationships, employment, healthcare and accessing various community resources.

CookShop provides an opportunity to educate participants on Food Stamps, Earned Income Tax Credits and other important benefits that help families move towards economic independence. During every workshop, a case manager completes a participant Food Stamp survey, encouraging new clients to apply if they have not already and ensuring they have clear, accurate and updated benefits information.



### CLIENT ADVISORY BOARD (CAB)

The CAB was formed in 2004 through a grant in collaboration with NYC Coalition Against Hunger. Included in the grant was the use of social work interns from Hunter College to coordinate the development of the CAB. The CAB members provide YCP feedback from our clients, allowing clients and staff to act in partnership with the surrounding community. CAB has implemented a Client Bill of Rights and Responsibilities, as well as publishing a quarterly newsletter. CAB members were most helpful in moving to our interim locations.





# YCP'S GRAND RE-OPENING



**Top photo from left to right:** Robin Hood Foundation's Kwaku Driskell, YCP Board Chair Sherrell Andrews, NYC Food Policy Coordinator Benjamin Thomases, Co-Chair of YCP's Fund for the Future Committee Linda Holt, YCP's Executive Director Carolann Johns, and Watson & Associates' Jamie Watson.





**June 6th and 7th, 2007**

**ON JUNE 6TH, YCP proudly held a ribbon cutting and officially opened our new doors to the Community. We were delighted to see so many well-wishers and supporters admiring our Pantry, dining room, laundry and shower facilities, ramp, and elevator.**

# 25th ANNIVERSARY GALA

The Yorkville Common Pantry's 25th Anniversary Gala on October 19th, 2006 was the culmination of many months of planning and hard work by our Events Committee. Long time supporters and Board Members Rebecca Robertson and Veronica Stubbs were honored at this extraordinary evening that recognized the Pantry's 25 years of excellence and celebrated its promising future.





# Volunteers

joined together to create the Pantry.

This small group of dedicated people has since evolved into hundreds of volunteer groups and individuals contributing their talent and time towards the goal of reducing hunger in our community.

## SPONSORING ORGANIZATIONS

Our 19 religious sponsoring organizations not only provide volunteers, Board members, funds, food and other donations, but further infuse our work with profound meaning and reward. We consider these organizations to be caring members of the extended YCP family, and feel very fortunate to have their dedication and involvement.

▪ The Brick Presbyterian Church ▪ The Church of St. Edward the Martyr ▪ The Church of St. Ignatius Loyola ▪ The Church of the Heavenly Rest ▪ The Church of the Holy Trinity ▪ Madison Avenue Presbyterian Church ▪ Park Avenue Christian Church ▪ Park Avenue United Methodist Church ▪ Park Avenue Synagogue ▪ St. James' Church ▪ St. Jean Baptiste Church ▪ St. Joseph Yorkville ▪ St. Stephen of Hungary ▪ St. Thomas More Catholic Church ▪ St. Vincent Ferrer Church ▪ Temple Emanu-El ▪ Temple Israel of the City of New York ▪ Temple Shaaray Tefila ▪ The Unitarian Church of All Souls ▪

## SCHOOLS

Throughout the years we have built relationships with nearby schools that continue to strengthen and expand the YCP family. Community service interns support our efforts and educate their peers about poverty and hunger. Groups from various schools organize food drives, or donate toys, Easter baskets, books and clothing for YCP families. Their commitment is always inspiring and tremendously appreciated.

Abraham Joshua Heschel School ▪ Abraham Lincoln School ▪ Alexander Robertson School ▪ All Souls School ▪ Allen-Stevenson School ▪ Appalachian State University ▪ Ark Nursery School ▪ Bank Street College of Education ▪ Baruch College ▪ Campus High School ▪ Belmont Academy High School ▪ Bronx Academy of Letters ▪ Bronx International High School ▪ Brooklyn Tech ▪ Bushwick High School ▪ Central Park East Middle School ▪ Central Synagogue May Family Nursery School ▪ Children's All Day School ▪ City College ▪ Collegiate School ▪ Columbia Grammar and Preparatory School ▪ Columbia University ▪ Convent of the Sacred Heart ▪ Cristo Rey New York High School ▪ De La Salle Academy ▪ Eleanor Roosevelt High School ▪ Epiphany Community Nursery School ▪ Epiphany School ▪ Ethical Culture Fieldston ▪ Fordham University ▪ Heschell School Horace Mann Hunter College ▪ Hunter College High School ▪ Iona College ▪ Isaac Newton MS ▪ John Adams High School ▪ Joint School Consortium ▪ Junior High School 13/Spins 4 Program ▪ Junior High School 54 ▪ Life Science High School ▪ Lycée Français de New York ▪ MS 45 ▪ MS 584 ▪ Mandell Nursery School ▪ Manhattan Country School ▪ Martin Luther King Jr. High School ▪ Marymount School ▪ Mt. Carmel-Holy Rosary School ▪ New York University ▪ Orangeville District School ▪ P.S. 146 ▪ P.S. 158 ▪ PS 179 ▪ P.S. 290 ▪ P.S. 57/Spennville Program ▪ P.S. 6 ▪ PS 86 ▪ PS 179 ▪ Pace University ▪ Park Avenue Christian Church Day School ▪ Parkside School ▪ Philosophy Day School ▪ Ramaz School ▪ Regis High School ▪ Resurrection Episcopal Day School ▪ Resurrection School ▪ Riverdale Country School ▪ SAR High School ▪ Rudolf Steiner School ▪ Seton Day Care Center ▪ Solomon Hechel ▪ St. Bernard's School ▪ St. Ignatius Loyola School ▪ St. Joseph's School ▪ St. Stephen of Hungary School ▪ St. Thomas More Playgroup ▪ Stephen Gaynor School ▪ Talented and Gifted School ▪ Teak School ▪ Temple Emanu-El Nursery School ▪ Temple Israel's Early Childhood Learning Center ▪ The Birch Wathen Lenox School ▪ The Brearley School ▪ The Brick Church School ▪ The Browning School ▪ The Buckley School ▪ The Caedmon School ▪ The Calhoun School ▪ The Cathedral School ▪ The Chapin School ▪ The Children's Storefront School ▪ The Collegiate School ▪ The Dalton School ▪ The Dwight School ▪ The East Harlem School at Exodus House ▪ The Family School ▪ The Family School West ▪ The Gateway School of New York ▪ The Gillen Brewer School ▪ The Hewitt School ▪ The International Preschool ▪ The Madison Avenue Presbyterian Day School ▪ The Madison Playgroup ▪ The Nightingale-Bamford School ▪ The Spence School ▪ The Town School ▪ The William Woodward, Jr. Nursery School ▪ Trevor Day School ▪ Trinity School ▪ West Virginia University ▪ York Avenue Preschool ▪

## HOW CAN YOU VOLUNTEER AT THE PANTRY?

Please contact Gladys Ortiz, Volunteer Coordinator, at 917.720.9710, if you would like to become part of this unique experience.



## Goods & Services

Allure Lingerie ▪ Angelo & Maxie's ▪ Armani ▪ Awake & Sing ▪ Bach Sales-Barney & Linda Balcourt ▪ Best Buy ▪ Billy Endico ▪ Boden Mail Order ▪ Susan Bohan ▪ Hilary & Paul Brown ▪ Bumble + Bumble ▪ Café des Artistes ▪ Calvin Klein ▪ Candle 79 Restaurant ▪ Carlisle Collection ▪ CBS - Allen Alter ▪ Central Park Conservancy ▪ Chamber Music Society, Lincoln Center ▪ Chelsea Piers Sports & Ent ▪ City Crab ▪ Corby Hall Dinnerware ▪ Craftsteak ▪ Daroma ▪ Darrell Kate ▪ Due Restaurant ▪ Duke's Restaurant ▪ DWI Holding, Inc ▪ Eli's Vinegar Factory ▪ Frutels/Ellie Sawits ▪ Godiva Chocolates ▪ Dr. Robert Guida ▪ Inform Fitness ▪ Island Restaurant ▪ Linda Holt ▪ J. McLaughlin ▪ Jerome Florists, Inc. ▪ Joan Devine Morosani ▪ John Barry's Restaurant ▪ Jonathan Adler ▪ K & D Wines & Spirits ▪ Keens Steakhouse ▪ La Grenouille ▪ Late Show with David Letterman ▪ Lia Schorr Skin Care ▪ Lobel's Prime Meats ▪ Lord & Taylor ▪ Manhattan Bridge Club ▪ Mark Hotel ▪ McCabe's Wines & Spirits ▪ Mercedes-Benz, Manhattan ▪ Michael Nachman ▪ Micky Markowitz-Daroma ▪ Mr. Wright's Liquor ▪ Nancy Koltes at Home ▪ NBC ▪ NEMF - Nancy Blakeman ▪ New York Philharmonic ▪ New York Yoga ▪ Oren's Daily Roast ▪ Orpheus Chamber Orchestra ▪ Pashah Salon ▪ Plaza Florist ▪ Quad Cinema ▪ Revlon ▪ Lite Sabin ▪ Sharz Café ▪ Sheila Traglio ▪ Skyy Vodka ▪ Sterling Blooms ▪ Sylvester & Gilliam Miniters ▪ Table d'Hôte ▪ The Carlyle Hotel ▪ The Manhattan Grille ▪ The Party Box ▪ Verdura ▪ Wendy Stein ▪ Wildlife Conservation Society ▪ Works Gallery ▪ Zebu Grill ▪

## HELENE ABRAHAM AWARD 2006 TO NEW YORK CARES



Each year, New York Cares brings vital volunteer support to over 850 diverse non-profit agencies, public schools and other deserving organizations throughout the five boroughs. The program staff works with each organization to identify its most pressing needs, create projects where volunteers can make meaningful contributions and then recruit and deploy teams of volunteers to help meet those needs. Last year, New York Cares enabled more than 30,000 New Yorkers to donate their time and talents to help serve our community.

Since 1997, New York Cares has regularly taken part in YCP's programs. From tutoring our youngest members to sorting, packing and distributing groceries, New York Cares volunteers have embraced the YCP community. They are an invaluable asset to our family and we are honored to present them with the Helene Abraham Volunteer Community Service Award for 2006.

On behalf of the Board, staff, and YCP clients, we thank New York Cares for all they do and look forward to many more years of partnership.



**Theatre Benefit | March 25, 2007**

**The Annual Theatre Benefit is an important source of funding for YCP.**



### Junior Dances

YCP joins four other neighborhood charities to sponsor a 6th, 7th and 8th grade dance during the school year. These events are enthusiastically attended and at the same time contribute a significant amount to YCP funding. Parent chaperones, as well as students, come to know about the Pantry and have fun, too.



## America's Second Harvest



In an effort to strengthen our relationship with City Harvest, YCP agreed to host the launch of their Spread the Sharing campaign with Shedd's Country Crock and America's Second Harvest. Led by spokesperson and singer Amy Grant, the campaign calls participants to go online to [www.SpreadTheSharing.com](http://www.SpreadTheSharing.com) and share a story of sharing. For every story, Country Crock will donate a

meal through America's Second Harvest. Country Crock's goal was to donate a million meals by Thanksgiving 2007. Having moved our programs and administrative offices back into the newly renovated space on Monday, April 16th, we held our first Pantry Distribution Day on Wednesday, April 18th, with Amy Grant and a group of teenagers from YSOP giving groceries to our clients. We have also partnered with City Harvest and Greenmarket Farmers Market to pick up fresh produce from a local Green Market.

# GRANTS AND GIFTS

With the generous support of all our donors, YCP has continued to reduce hunger and provide needed support for thousands of low-income New Yorkers. We are committed to continuing to provide efficient and effective services and it is with great sincerity that we thank you for sharing in our mission.

## CHAIRMAN'S CIRCLE - \$500,000 + ROBIN HOOD FOUNDATION

### \$100,000 + Donors

VERONICA AND MICHAEL STUBBS

### \$50,000 + Donors

AMERICA'S SECOND HARVEST

CARNEGIE CORPORATION OF AMERICA

### \$25,000 + Donors

THE ALEXANDER ABRAHAM FOUNDATION  
DOVER CORPORATION

MR. AND MRS. MICHAEL G. FISCH  
THE HORACE W. GOLDSMITH FOUNDATION

KRAFT EMPLOYEE FUND  
REBECCA ROBERTSON AND BYRON KNIEF

### \$15,000 + Donors

THE BRICK PRESBYTERIAN CHURCH  
THE THEODORE H. BARTH FOUNDATION

THE JEAN AND LOUIS DREYFUS FOUNDATION  
PARK AVENUE UNITED METHODIST CHURCH

ST. THOMAS MORE CATHOLIC CHURCH

### \$10,000 + Donors

KARIN AND HENRY C. BARKHORN III  
CHURCH OF ST. IGNATIUS LOYOLA  
CANDICE AND JOHN FRAWLEY  
BARBARA AND HENRY GOOSS

SUSAN AND PETER KESSLER  
MADISON AVENUE PRESBYTERIAN CHURCH  
CHARLES MALLORY  
THE MILBANK MEMORIAL FUND

THE RITTER FOUNDATION, INC.  
WENDY STEIN AND BART FRIEDMAN  
UNITED WAY OF NEW YORK CITY

## \$5,000 + Donors

ERIC ALTMANN  
SHERRELL ANDREWS AND ROB KUHBACH  
IRVING BERLIN CHARITABLE FUND  
BRICK CHURCH WOMEN'S ASSOCIATION  
TERRY CHABROWE  
MR. AND MRS. PETER A. FLAHERTY  
LINDA AND PAUL HOLT  
RITA J. AND STANLEY H. KAPLAN FAMILY FOUNDATION  
LENOX HILL NEIGHBORHOOD HOUSE

CHRISTINE LASALA AND ELLEN LIPSCHITZ  
THE LITWIN FOUNDATION  
MARILYN AND JAY LUBELL  
MARY AND LARRY MCCAFFREY  
ANNE P. AND JOHN A. MACKINNON  
NEW YORK & COMPANY  
THE PARTNERSHIP FOR THE HOMELESS  
THE PENATES FOUNDATION  
MR. AND MRS. DAN RATHER

MARY JANE ROBERTSON  
JUDY AND TIM RUDDEROW  
DIDI FENTON SCHAFER AND OSCAR SCHAFER  
MARTY AND DOROTHY SILVERMAN FOUNDATION  
ST. VINCENT FERRER'S CHURCH  
TEMPLE EMANU-EL  
WADE F. B. THOMPSON CHARITABLE FOUNDATION  
ROBERT ALLAN WHITE  
WORLD WINGS INTERNATIONAL, INC.

## \$1,000 + Donors

ANTONIA ABRAHAM  
M. BERNARD AIDINOFF AND ELSIE V. AIDINOFF FOUNDATION  
ARAMARK  
MR. AND MRS. CHARLES BERGOFFEN  
PHILLIP J. BERGAN  
NANCY BLAKEMAN  
DONNA J. BOLKCOM  
M. BOOTH & ASSOCIATES, INC.  
JENNY GERARD BROWN  
HILARY AND PAUL BROWN  
THE BROWNINGTON FOUNDATION  
CHERYL BUNDY  
MARY L. BUNDY  
HELEN CHAPMAN AND ROBERT MONROE  
THE CHURCH OF THE HEAVENLY REST  
CITY NATIONAL BANK  
COMMON CENTS NEW YORK, INC.  
CONGREGATION OF THE BLESSED SACRAMENT  
PETER CONZE  
THE COWLES CHARITABLE TRUST  
THE CHASE FAMILY FOUNDATION  
THE G. L. CONNOLLY FOUNDATION  
CATHERINE CURRY AND ANDREAS V. GIL  
THE JOSEPH R. DALY FOUNDATION  
MR. AND MRS. MICHAEL DEHAVENON  
MR. AND MRS. JAMES J. DUNNE III  
THOMAS L. EISENBERG  
WILLIAM A. ENDICO  
CHRISTOPHER ENGEL  
KAREN AND JOHN W. ERICKSON  
SUZANNE FAWBUSH AND CHRISTOPHER GRISANTI  
BETH AND SHELDON FINKEL  
MR. AND MRS. JAMES FISHMAN  
MR. AND MRS. STEPHEN R. FLEISCHER  
KATHLEEN G. FLINTOFT  
MR. AND MRS. WILLIAM E. FORD

MR. AND MRS. JOHN FOUHEY  
ASHLEY GARRETT  
SUMNER GERARD FOUNDATION  
MR. AND MRS. THOMAS H. GOUGE  
JEFFREY GRIEB  
LISA GROSS  
ROBERT P. GUNN  
DRUCILLA HASKIN  
MR. AND MRS. VALENTIN HERNANDEZ  
EMY & EMIL HERZFELD FOUNDATION  
CAROL AND CARL HESS  
FRANCES HESS  
MARLENE HESS AND JAMES ZIRIN  
MR. AND MRS. J. TOMILSON HILL  
JAMIE HIRSH  
MR. AND MRS. DEWITT HORNOR  
JUDITH HOWARD  
MR. AND MRS. JEFFREY HUGHES  
MR. AND MRS. EDWARD S. HYMAN JR.  
INGRAM FAMILY FOUNDATION  
MR. AND MRS. ALAN W. JAMES  
MR. STEVEN JERACI  
KEL-MAR DESIGNS-INTERIORS, INC.  
MR. AND MRS. DEREK KIRKLAND  
LEVIE & COMPANY, INC.  
MR. AND MRS. JAMES LEWIS  
CHER LEWIS  
THE LITWIN FOUNDATION  
MR. AND MRS. MICHAEL O. MAGDOL  
ELINOR MANNUCCI  
MR. AND MRS. JAMES McDONALD  
EILEEN MCEVOY  
METZGER-PRICE FUND, INC.  
MRS. STANLEY MILLER  
THE LEO MODEL FOUNDATION  
MR. AND MRS. RODMAN W. MOORHEAD IV

DOREEN AND LARRY MORALES  
J.P.MORGAN CHASE FOUNDATION  
MR. AND MRS. ALAN C. MYERS  
RUTH HOROWITZ AND MICHAEL NACHMAN  
KATHY NALYWAJKO  
NATIONAL AUSTRALIA BANK  
NEIMAN MARCUS GROUP  
NEW YORK CHARITIES  
MR. AND MRS. DANIEL PADUANO  
MR. AND MRS. BRUCE D. PATRICK  
PEERLESS IMPORTERS, INC.  
WENDY AND JOHN D. PHILLIPS, JR.  
MARSHA AND PETER PRONT  
SANDY AND TOM REECE  
MR. AND MRS. RAFAEL ROJAS  
MR. AND MRS. ELIHU ROSE  
LITE AND ARNOLD L. SABIN  
JOLIE SCHWAB  
ELIZABETH SENKO  
ST. JAMES' CHURCH  
ST. JOSEPH'S YORKVILLE  
ST. BERNARD'S SCHOOL  
STAINMAN FAMILY FOUNDATION  
SANDRA STARK AND JIM MERSFELDER  
TEMPLE SHAARAY TEFILA  
MR. AND MRS. E. E. TIERNEY  
MR. AND MRS. WOLFGANG TRABER  
NANCY TURNER  
MR. AND MRS. YOUNGHEE WAIT  
MR. AND MRS. SAMUEL WEINHOF  
THE WEISER PHILANTHROPIC FUND  
LAURA AND JAN WEISSBERG  
MR. AND MRS. ROBERT WILLIAMS  
LYNN AND JOHN ZURCHER, JR.



## \$250 - \$999

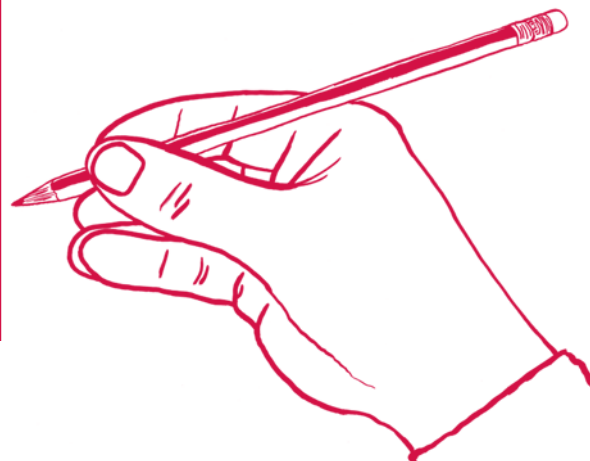
MR. AND MRS. PAUL ADAMS  
ALAN ARMIN  
ROBERT C. ALUTIN  
JEFFREY AMBERS  
MR. AND MRS. ALAN APPELBAUM  
MARIAN BACH  
ADELIN AND BRUCE BAKKE  
JAMES BEHA  
JANIE BERMAN  
FOOD FOR NEEDY  
MR. AND MRS. WILLIAM P. BOURNE  
GREGORY BROWN  
CINDY BROWN  
TODD BUCHANAN  
JAMES BURNS  
THE CENTER FOR STUDENT MISSIONS  
THE CHAPIN SCHOOL  
CITIGROUP FOUNDATION  
JOHN CAHILL  
WILLIE R. CARTER  
AMY CHANOS  
JOANNA CHAPIN  
LOLA L. CHLUPSA  
COURTNEY COLLINS  
RICHARD F. CZAJA  
JOHN DALE  
CHRISTINE DARNELL  
DOROTHY R. DAVIES  
MR. AND MRS. PAUL C. DIETCHE  
JONATHAN DODGE  
LUCINDA S. DUDDY  
ROBERT J. EASTON  
MATTHEW EDMONDS  
JACK ELLENBERGER  
CAROLE AND RICHARD L. EPPLEY  
MARY D. FAUCHER  
MR. AND MRS. GREGORY D. FELLER  
MR. AND MRS. RALPH FISHER  
HUGH FITZPATRICK  
HOLLEY AND RUSSELL FLAGG  
OLIVIA FLATTO  
ROSEMARY J. GELSHENEN  
STEVEN WARNER GOLANN  
SCOTT GOLDSTEIN  
JOHN GORDON  
JUDY GREENFIELD  
JOHN E. GREENWOOD

MR. AND MRS. JAMES C. HANCHETT  
SUSAN M. HANCHETT  
WILLIAM HANEY III  
JOSEPH HANSEN  
ALICE HARRAD  
ALFRED HINCKLEY  
CYNTHIA AND RON HOFFMAN  
KAREN HSU  
STEVEN J. HYMAN  
MR. AND MRS. GARY ISRAEL  
PETER JACOBSON  
MADELEINE JAMES  
EMMANUEL JAVOGUE  
KIRSTEN L. JOHANSON  
ALEXANDER JOHNSON  
SHARON JOHNSON  
PETER S. KALIKOW  
JEROME KENNEY  
RICHARD KERESKY  
KLEGER FAMILY FOUNDATION  
MR. AND MRS. CHARLES KLEIN  
JOHN S. KRAUS  
ARTHUR J. KREMER  
MR. AND MRS. THEODORE KURZ  
BRUCE E. LAFRANCHI  
DAVID M. LAGRECA  
REBECCA LYNCH  
MR. AND MRS. JAMES M. LYONS  
KENNETH MARIN  
MEYER MARKOVITZ  
MASTERCARD INTERNATIONAL  
DR. AUDREY MAURER  
STEPHEN P. MCCANDLESS  
MARY JOAN MCGOVERN  
LUANNE MCGRAIN AND ERIC BRAUER  
THE MCGRAW-HILL COMPANIES  
GERARD M. MEISTRELL  
WILLIAM MILLER  
ALICE K. MOORHEAD  
ALICE NAUDE  
NETWORK FOR GOOD  
MR. AND MRS. THOMAS NEWBERRY  
MR. AND MRS. JAMES NIVEN  
PATTI OGDEN AND JACK MCGRATH  
AUGUSTUS K. OLIVER  
DAVID A. OLIVER  
PAMELA TOY ONG

HELENA D. PARK  
KENNETH I. PEARLMAN  
RANDY PERSKIN  
ROBERT PIETRAK  
MR. AND MRS. LORING G. PRATT  
MR. AND MRS. GUY C. QUINLAN  
JEFFREY S. RACKOVER  
ROBIN HENRY  
DAWN RAVELLA  
ROSE MARIE RICCIO  
RICHARD RIPPE  
TIMOTHY ROBERTS  
JAMES ROBINSON  
FELLOWES M. RODD  
ROMINA ROSADO  
C. TANNER ROSE  
ELLEN ROSEN  
HILDA ROSENTHAL  
RICHARD RUDDER  
WINTHROP RUTHERFORD  
NORA L. RYAN  
WENDY GARTNER SALLES AND LARRY SALLES  
ROSEMARIE SALVATORE  
MR. AND MRS. TOMAS SCULCO  
KARL SEIB  
SILVERMAN CHARITABLE GROUP  
JONATHAN A. STEIN  
WENKE B. STERNES  
ANNE L. STRASSNER  
MARY SULLIVAN  
CELINA AND TAM-YICK TAI  
TEMPLE ISRAEL OF THE CITY OF NEW YORK  
FRANCES FISH TOMPKINS  
MR. AND MRS. JAMES TORREY  
SHEILA TRAGLIO  
MR. AND MRS. JOHN TWINAME  
KATHLEEN VAN BOCKSTAELE  
PAUL VIZCARRONDO  
LINDY VON EICHEL  
KENNETH WANG  
RICHARD WEEKS  
IRENE WEINSTOCK  
WILLIAM J. WELSH  
BONIFACE ZAINO  
LOUIS ZIMBARO

### HOW TO MAKE A GIFT TO YCP

The Internal Revenue Service has determined that YCP is exempt from Federal income tax under Section 501(c)(3) of the Internal Revenue Code of 1986 and is a publicly-supported charity under Section 509(a)(1). YCP therefore qualifies for the maximum charitable contribution deduction allowed to individual donors. If you would like to discuss Will bequests or other planned giving techniques, in order to provide YCP with a more stable long-term financial base, please contact Director of Development, Susie Hanchett at 917.720.9707 or [shanchett@ycp.org](mailto:shanchett@ycp.org).



## OUR PARTNERS IN THE COMMUNITY

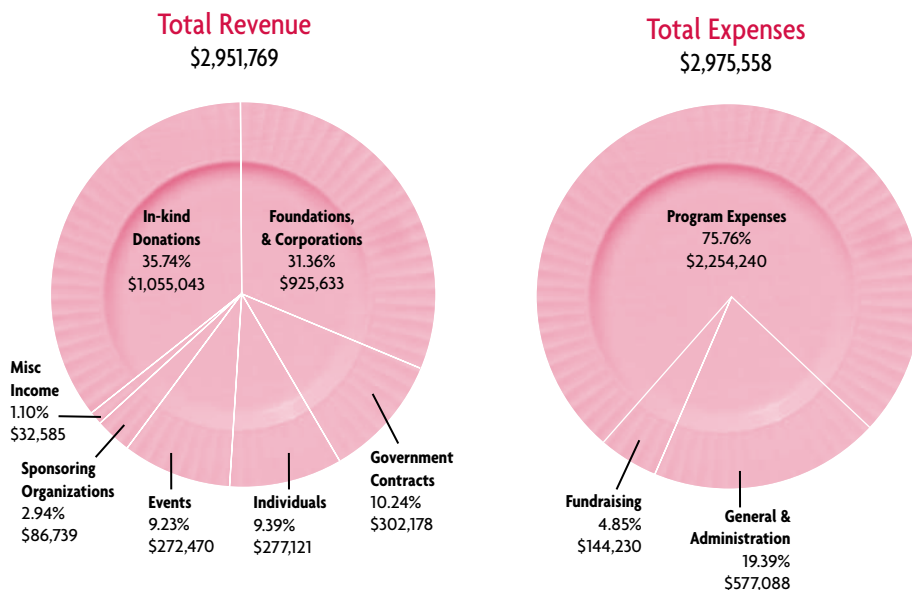
YCP has been able to strengthen its linkages with allied support organizations that can assist in improving the quality of life of our families.

**Mt. Sinai Medical Center's** community services has been able to bring screening services to YCP, including stroke pre-screening. **The Children's Aid Society** has provided our families with assistance in selecting an appropriate managed care program for their Medicaid/Medicare benefits.

**Settlement Health** is providing free HIV/AIDS outreach material and testing to our breakfast program clients.

**Food Change** has maintained Food Stamps pre-screening once a week and most exciting, YCP has collaborated with **New York City Coalition Against Hunger, Food Change & Human Resources Administration** to become a test site for a paperless food stamps application office. Families and Individuals can call Food Change's food stamp hotline and get pre-screened for food stamps. Then, rather than go to a city food stamps office, families and individuals can come to YCP to have their application processed in a welcoming environment. YCP is planning collaboration with the **Urban Justice Center** to provide legal assistance to clients having difficulty with entitlements. We are also collaborating with the **New York City Department of Health and Mental Hygiene** to train staff members and volunteers to take and assess the blood pressure of our clients. Based on the outcome of the assessment, staff and volunteers will be trained to refer clients to a physician, clinic or the emergency room, if necessary.

## YCP FINANCIAL SUMMARY — fiscal year July 1, 2006 - June 30, 2007 (net of event expenses)



**YCP's Total Ending Net Assets for fiscal year ended June 30, 2007 are \$4,810,000.**

The above information was abstracted from unaudited financial statements for the fiscal year ending June 30, 2007. Audited financial statements are on file at Yorkville Common Pantry, 8 East 109th Street, New York, NY 10029-3402. A copy of the annual report filed with the New York State Office of Charities Registration may be obtained on request from Yorkville Common Pantry.



**YCP Employees:** listed alphabetically because not all were available for this photograph.

Maria Bakht, Reginald Barnes, Allan Brown, Carmelo Capo, Sheila Corrales, Michael Fields, Ronald Francis, Wendel Franks, Lee Gardner, Susie Hanchett, Carolann Johns, Juan Mendez, Gladys Ortiz, Anthony Perri, Daniel Reyes, Tommy Robinson, Shonda Simpkins, Yolanda Singelton, Eileen Skinner, Marion Williams.

- Antoine de Saint-Exupery

[illegible]

SP. We had made a silence of the words which came from their mouths. They stand shoulder to shoulder. They discover that they belong to the same family. They wax and bloom in the recognition of fellow beings. They look at one another and smile. They are like the prisoner set free who marvels at the immensity of the sea.

And these human relations must be created. One must go through an apprenticeship to learn the job. Now,

go through. And risk are a help here. When we exchange manly hand  
shakes, compete in races, join together to save one of us  
who is in trouble, cry aloud for help in the hour of  
danger—only then do we learn that we are not alone on  
earth. man must look to himself to teach him the mean-

ing of life. It is not something discovered: it is something moulded. These prison walls that this age of trade has built up round us, we can break down. We can still run free, call to our comrades, and marvel to hear once more,

29

## IN-HOUSE

## ART AND PHOTOGRAPHS

COVER PAINTINGS AND ILLUSTRATIONS: PETER ARKLE

ARCHITECTURE PHOTOS | PAGES 4-6: © KEVIN CHU/KCJP

YCP PROGRAMS PHOTOS: SUSIE HANCHETT

**BETH SELCOV**

OPENING CEREMONY PHOTOS: ROSSA COLE

25TH ANNIVERSARY GALA PHOTOS: ELKE ROSTHAL

## PRINTING

FLM GRAPHICS

## DESIGN

BINZEN + BINZEN



